

Eat – Drink – Have Fun - Run # 6



Hug Your Sweetheart Day Rusty Rail Brewing Company Saturday August 23, 2025



Spend a relaxing afternoon with your Hershey Region friends at the famous Rusty Rail Brewing Co. in scenic Mifflinburg, PA. The Rusty Rail Brewery is located within the former Mifflinburg Body Company Building where thousands of Ford Model T and Ford Model A truck bodies were once built. Dinner Buffet will be served in the “Pardee Room” located on the second floor. Park in the North Parking Lot and enter using the main entrance door on the left then follow signs for the “Pardee Room”

- 1:00 – 1:30 PM – Registration & Sign-in at Rusty Rail
- 1:30 PM – Dinner Buffet Opens
- 3:00 – 5:00 PM – Optional Brewery Tours and Dancing

Rusty Rail Brewing Company - 5 North 8th Street - Mifflinburg, PA. 17844

Approximately 55 Miles North of Harrisburg via Route 15 and Route 104

Buffet Dinner starting at 1:30 PM includes – Tossed Salad – Stuffed Chicken Breast – Wolf King BBQ Meatloaf – Beef Stroganoff with Egg Noodles – Mashed Potatoes- Vegetable Medley – Frosted Brownies – Iced Tea – Coffee – Soda - Cash Bar

After Dinner - Fantasia Disc Jockey for your Listening and Dancing Pleasure and optional Brewery Tour.

Don't Forget it will be **National Hug Your Sweetheart Day** too!

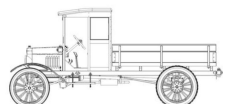
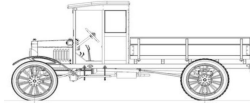
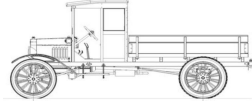
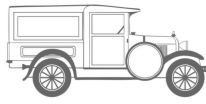
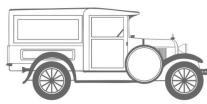
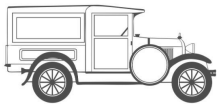
If you don't have a Sweetheart it's also **Find Your Inner Nerd Day** so take joy in whatever makes you Happy

Please return payment in a separate SMALL envelope for each Activity

Mail to: Tim Emerich – 721 Skyview Dr. – York, PA. 17406

Make Checks Payable to: Hershey Region AACA

Deadline - July 26, 2025 - Call Tim with questions 717-824-5186



Name	Phone:
City:	Email: <small>Include an Email for Confirmation that we Received your Check</small>
Rusty Rail Buffett @ \$38.00 pp x _____ = \$ _____	
Optional Brewery Tour @ \$5.00 pp x _____ = \$ _____	
Run #6 Rusty Rail	Total Enclosed = \$ _____

Mail to Tim Emerich - 721 Skyview Dr. - York, PA. 17406

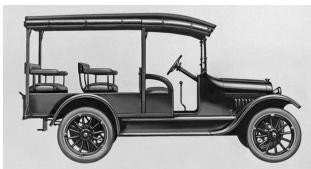
IF OUR BUILDING COULD TALK

it would speak of rugged workers who got by on the determination in their hearts, the strength of their backs and the dirt on their hands. We proudly dedicate every ounce of our beer to those whose efforts have forged the American work ethic. So grab a cold one and pay tribute to the past by making the most of the present!



Buggy Town: From 1850 to 1920, Mifflinburg was home to over 75 carriage manufacturers, earning it the nickname of “Buggy Town” in the early 1880s. Rusty Rail Brewing Company has the honor of continuing a long and proud history of manufacturing here on Eighth Street. Although we cannot substantiate an exact date, local historians have told us that the building directly behind our brewery, nicknamed the Silk Mill, manufactured carriage seats as part of buggy production throughout the 1880s.

The Rise of the Horseless Carriage: In 1911, with the emergence of the automobile, several of Mifflinburg’s prominent carriage makers and businessmen formed the Mifflinburg Body and Gear Company and erected the building which houses our brewery and restaurant today. After several years producing carriage bodies, gears and axles, as well as automobile bodies, the company was purchased by Mifflinburg Buggy Company. In 1917, the two companies reorganized their operations as the Mifflinburg Body Company (MBC).



In 1919, MBC expanded production with an addition to the rear of this building - doubling their manufacturing capacity. In 1920, the Company’s first six months of sales equaled \$315,000 (just over \$3,750,000 today). The year 1922 brought a new catalog of bodies, specifically for Chevrolet’s Four Ninety and Model G commercial chassis (pictured here to the left). In 1923, MBC was selected as the exclusive supplier of suburban and delivery van bodies for the Model T “fighting star” automobile.

During the 1920s, nearly 300 people were employed in this building and MBC ran its own bus line to bring in workers from the surrounding countryside. They were also one of the first companies to offer employees both health and life insurance. By 1928 the firm was the second largest producer of wooden bodies in the United States, producing 20-25 automobile bodies a week, with annual sales of about \$1 million (equal to \$14,000,000 in today). Throughout this time period, it has been estimated that nearly half of the income in Mifflinburg was generated by the jobs at MBC. We are proud to display two trucks from this time period inside our restaurant - a 1917 Ford Model TT “Huckster” (located upstairs in our Game Room) and a 1923 Ford Model TT “Stake Body” (located in our main dining area) - each one was built right here in Mifflinburg!

By 1932, MBC produced over 1,000 half ton and one-and-one-half ton Model A Fords for the United States Postal Service as part of a Congressional authorization that allowed the agency to replace its fleet of World War I Parcel Post delivery vehicles.

Supporting the Troops: By the mid 1930’s, with a stable export business but diminishing domestic business (due in part to the stock market crash in 1929), MBC had evolved its production to include furniture manufacturing in addition to automobile bodies. In 1938, steel automobile bodies were introduced - further diminishing domestic business. MBC filed for Chapter X bankruptcy and was sold to the American Billiard and Bowling Company out of New York (a rear view of their Mifflinburg operation is pictured here to the right). MBC was renamed the Mifflinburg Body Works and skilled wood workers began building high quality pool tables, radio cabinets, shuffle boards and bowling lanes, as well as industrial-use hand trucks and material carts.



At the beginning of WWII, the strong work ethic and skills of the Mifflinburg work force would be used to build their most important products yet - the production of the military’s specially designed G518 one-ton cargo trailers, which could be towed by a variety of light-duty vehicles to transport essential supplies throughout war zones around the world. The Mifflinburg Body Works was one of only 38 firms to manufacture these trailers. In addition to G518 units, the Company also built travel trailers, which served as temporary housing for military personnel through the 1940s (pictured here to the left).

From Cars to Cabinets: The Mifflinburg Body Works closed in 1952 and the building changed hands once again when it was sold to Mifflinburg Industries in 1956. In 1968, Mifflinburg Industries merged with Colonial Products, later becoming Yorktowne, Inc. in 1973 (pictured to the right). Yorktowne was acquired by Elkay Manufacturing in the 1990s and this former Mifflinburg Body Works facility was used to kiln-dry and mill wood used in the production of household cabinets until 2005.



A New History Begins: In 2009, our building was acquired by local residents and brothers, Paul and Eric John. The South side of the building was refurbished to include a new, state-of-the-art cabinet manufacturing line for Legacy Crafted Cabinets. In 2013, after much consideration of potential uses for the North side of the building, the concept for the Rusty Rail Brewing Company was born. The goal for the Rusty Rail was to create a destination here in Mifflinburg that everyone could be proud of, and to pay tribute to the generations of hard working families that have built this community.

Mifflinburg was not built around a college, tourism destination, hospital or any other unique attraction; it was hugely affected by the railroad and built by hardworking men and women through industry and agriculture. Our ultimate mission is to create a world class dining experience that celebrates Mifflinburg’s past while providing exceptional craft beer, food, live entertainment and customer service in a one-of-a-kind dining atmosphere.